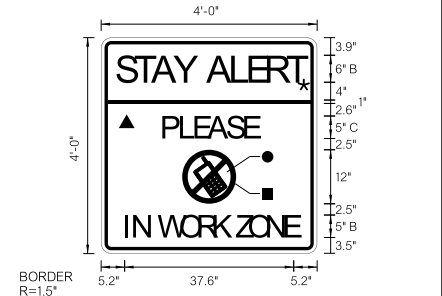
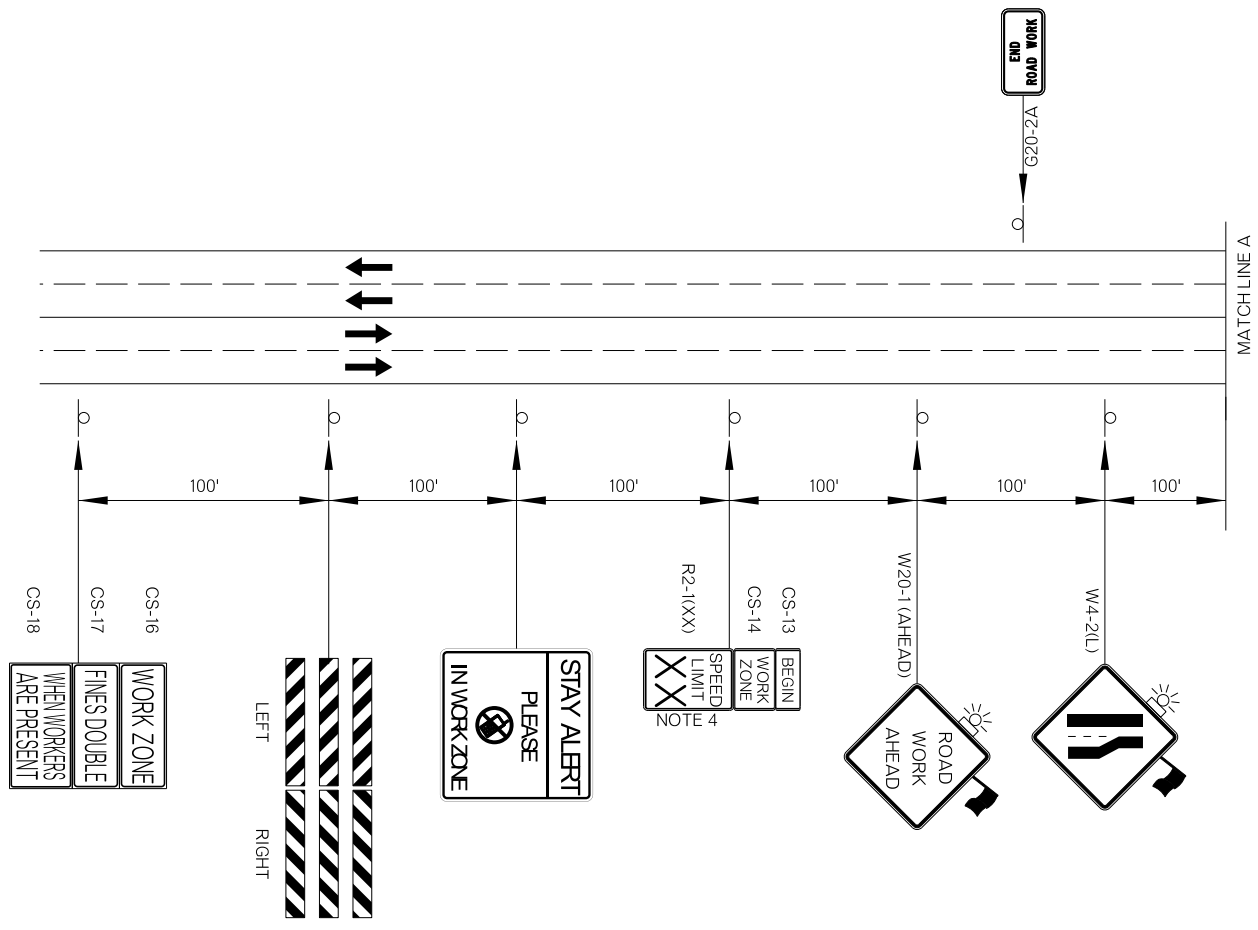
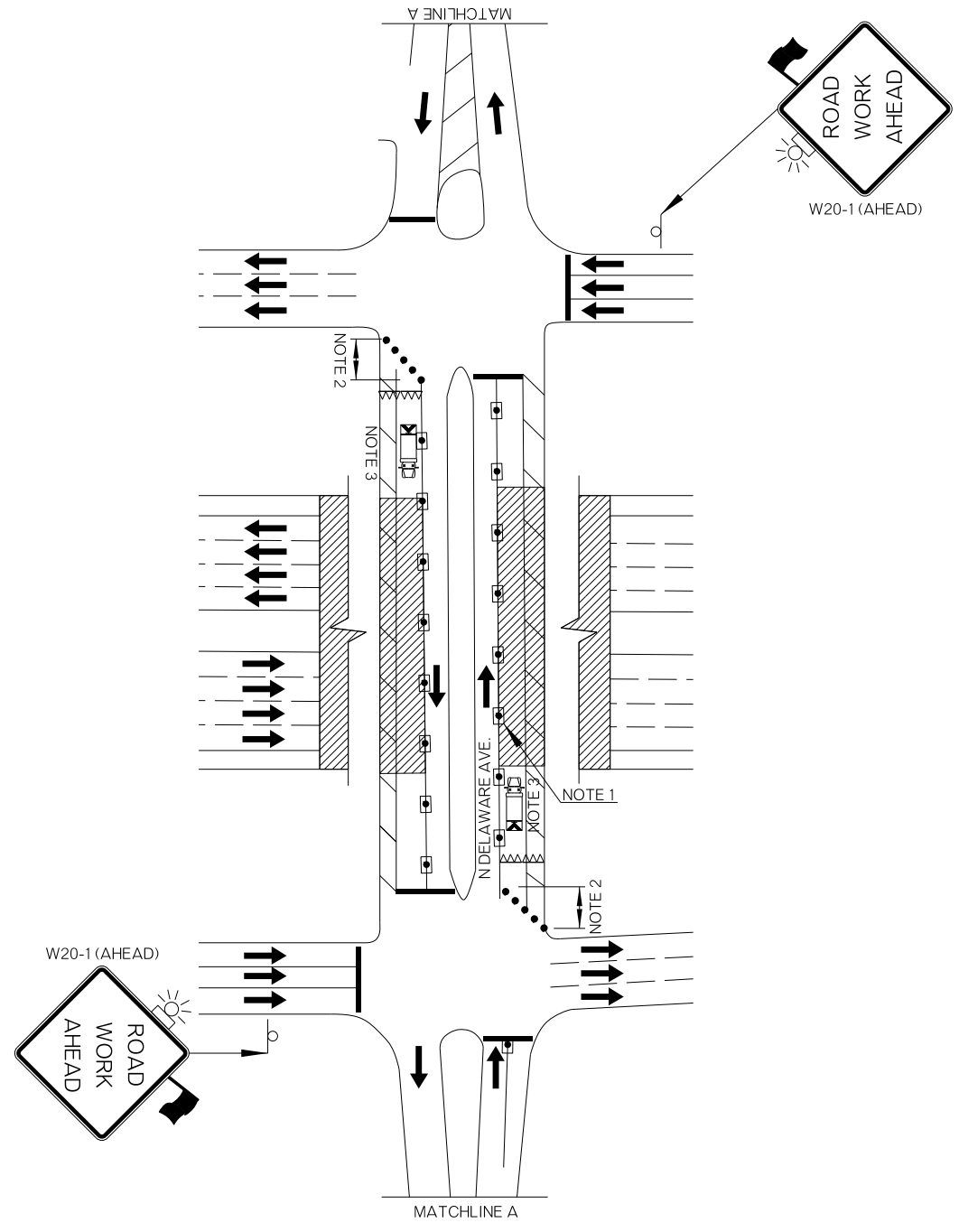


REVISIONS		
REV. NO.	DESCRIPTION	DATE



BORDER
R=1.5"
TH=0.75"
IN=0.75"

COLOR:
LEGEND, SYMBOL AND BORDER
BLACK (NON-REFLECTORIZED)
BACKGROUND:
▲ FLUORESCENT ORANGE (REFLECTORIZED)
★ FLUORESCENT YELLOW (REFLECTORIZED)
● WHITE (REFLECTORIZED)
■ RED (TRANSPARENT)



THERE IS NO SUGGESTED SEQUENCE OF CONSTRUCTION IN THIS DRAWING. INSIDE AND OUTSIDE LANES SHALL BE WORKED AS STATED IN THE PLANS OR AS DIRECTED BY THE ENGINEER. THE DETAILS SHOWN ARE FOR ONE LANE OF TRAFFIC CONTROL. ALL TRAFFIC CONTROL FOR THE ALTERNATE LANE WILL BE OPPOSITE OF THAT SHOWN.

KEY:

	SIGN
	DRUM
	CHANNELIZING CONE
	WORK AREA
	SHADOW VEHICLE
	TRUCK MOUNTED ATTENUATOR
	TYPE III BARRICADE

NOTE 1
MAXIMUM SPACING BETWEEN CHANNELIZING DEVICES (FEET) SHALL BE TWICE THE POSTED SPEED LIMIT (M.P.H.) WITH THE FOLLOWING EXCEPTIONS. SPACING SHALL NOT EXCEED 25 FEET FOR CONES OR TUBE CHANNELIZERS. SPACING SHALL NOT EXCEED 50 FEET FOR CHANNELIZER CONES, TYPE II BARRICADES, VERTICAL PANELS OR DRUMS.

NOTE 2
A MINIMUM OF FIVE (5) CHANNELIZING DEVICES SHALL BE PLACED THROUGH THIS AREA.

NOTE 3
THE SHADOW VEHICLE SHOWN AT THE BEGINNING OF THE WORK AREA SHALL BE IN PLACE WHENEVER WORKERS ARE IN THE WORK AREA. THIS VEHICLE SHALL BE REMOVED FROM THE ROADWAY WHENEVER WORKERS ARE NOT IN THE WORK AREA. THIS VEHICLE SHALL BE EQUIPPED WITH AN ACTUATED FLASHING OR REVOLVING YELLOW LIGHT.

NOTE 4
CONSTRUCTION SPEED LIMIT TO BE DETERMINED BY THE DIVISION ENGINEER.

NOT TO SCALE

TRAFFIC CONTROL DETAIL (BRIDGE G)			Drawn	JF	6/16
			Design	JF	6/16
STATE OF OKLAHOMA			Checked	SEB	6/16
			TRAFFIC ENGINEERING JAMI SHORT		
DEPARTMENT OF TRANSPORTATION		DIVISION 8	JOB PIECE NO.	30318(06)	SHEET NO. T006